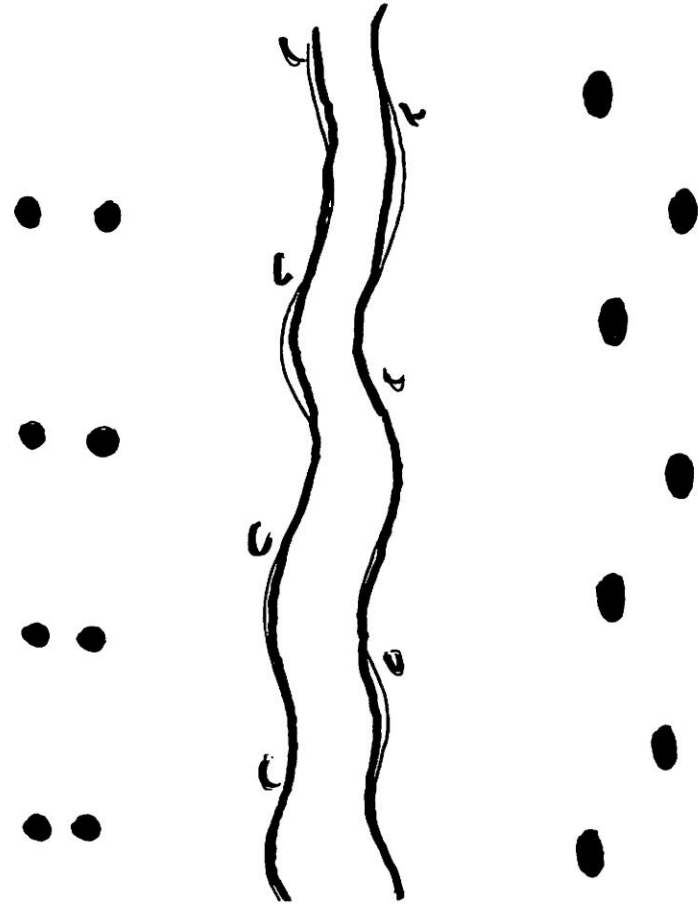
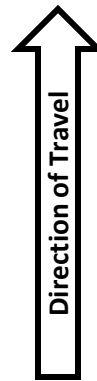
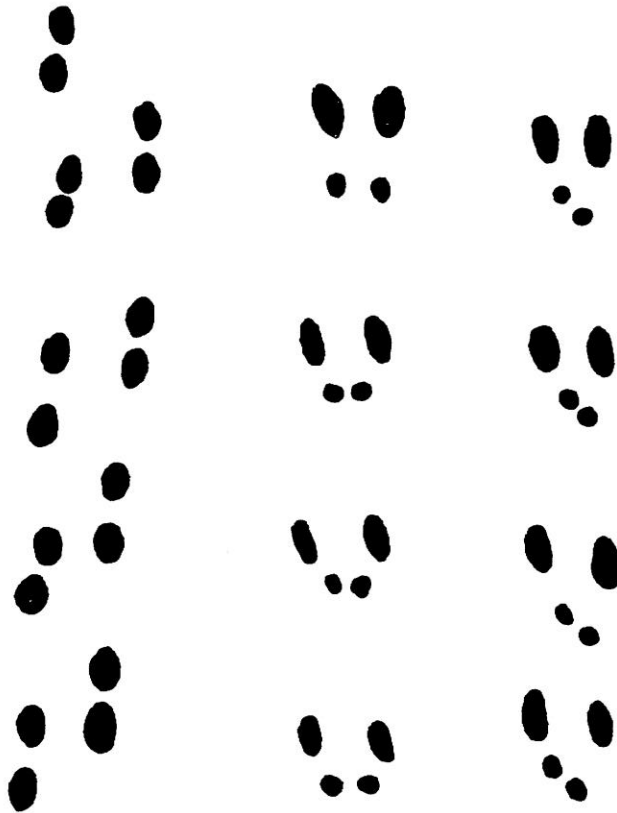


Track Pattern Guide

Matching up wild animals with their commonly associated track patterns (also known as gaits) first can really help you to narrow down the field to a small group of animals before identifying them by their individual footprints. Identify the track pattern first, then by the prints of individual species. Can you walk like any of these animals do? **Notes- Track patterns as shown here are generalized. Sometimes animals will create patterns during their travels, which appear similar to those more commonly associated with other species.*



Pacers: Raccoon, skunk, porcupine, beaver, opossum, woodchuck, muskrat.

Gallopers: Squirrel and mouse (above-left); and rabbit (above-right).

Bounders: Otter, fisher, mink, weasel; bounding along (above-left); otter or mink slide with footprints (above-right).

Diagonal Walkers: deer, dog, cat, fox, bobcat, mountain lion, human.